

Attitude towards physical punishment of children

Survey of Latvia's population

October 2005

Marketing and public opinion research centre



Content

Technical information of the survey	3
Terminology.....	4
Main results	5
1. Opinions about subjection of children to corporal punishment in Latvia	6
2. Attitude towards corporal punishment as a childrearing method	8
<i>Tables of results</i>	10
1. <i>Answers to the question “Regarding the entire population of children in your country as 100%, please estimate, what percentage of them experience corporal punishment (or beating/spanking as a penalty) in their families.”</i>	11
2. <i>Answers to the question “In your opinion, is corporal punishment of children a childrearing method, which “may be used if the parent believes it will be effective”, “should not be used in general, but there are situations when it is justified” or “should never be used”</i>	13
Questionnaire	15

Technical information of the survey

PERFORMER OF THE RESEARCH	Research Centre SKDS
POPULATION	Permanent residents of Latvia at the age of 18 to 74
PLANNED SAMPLE SIZE	1000 respondents (representative sample of the general population)
REACHED SAMPLE SIZE	1015 respondents
SAMPLING METHOD	Stratified random sampling
STRATIFICATION FEATURES	Administrative and territorial, and national
RESEARCH METHOD	Personal (face-to-face) interviews at the places of residence of respondents
GEOGRAPHICAL COVERAGE	All regions of Latvia (112 sampling points)
TIME OF SURVEY	From 14.10.2005 to 25.10.2005

COMPARISON OF THE REACHED SAMPLE WITH THE STATISTICS OF THE POPULATION

	The number of respondents in the sample (%) before weighting	The number of respondents in the sample (%) after weighting	Data from the Ministry of Interior, Population Register as of 01.01.05.
TOTAL	100.0	100.0	100.0

REGION

Riga	32.4	32.7	32.7
Vidzeme	22.7	23.9	23.9
Kurzeme	13.4	13.2	13.2
Zemgale	16.4	14.6	14.6
Latgale	15.2	15.7	15.7

SEX

Male	46.4	46.5	46.5
Female	53.6	53.5	53.5

NATIONALITY

Latvians	58.0	56.5	56.5
Others	42.0	43.5	43.5

AGE

18 - 24	13.0	14.7	14.7
25 - 34	15.7	18.8	18.8
35 - 44	20.9	19.3	19.3
45 - 54	19.3	18.5	18.5
55 - 74	31.1	28.7	28.7

STATUS

Employed	60.2	61.2
Not employed	39.8	38.8

EDUCATION

Basic	15.0	14.6
Secondary, secondary vocational	66.0	66.3
Higher	19.0	19.1

CITIZENSHIP

LR citizens	78.4	78.2
Respondents without LR citizenship	21.6	21.8

The data were subject to the weighting procedure.

Terminology

SAMPLE

Micromodel of the population of Latvia

TYPE OF RESIDENTIAL AREA

Riga – Riga city.

Another city – Daugavpils, Liepaja, Jelgava, Ventspils, Rezekne, Jurmala, regional centres, other cities.

Rural areas – villages, countryside.

EDUCATION

Basic – a respondent having basic or unfinished secondary education.

Secondary, secondary vocational – a respondent having general secondary education, secondary vocational or unfinished higher education.

Higher – a respondent having higher education.

SECTOR OF EMPLOYMENT

Public sector – respondents employed in state institutions or enterprises with the state capital.

Private sector – respondents employed in companies with private capital.

Unemployed – respondents: housewives, retired persons, pupils, students, unemployed persons.

Others – respondents having random jobs, paid jobs in NGOs, as well as respondents who could not indicate a definite sector of employment.

OCCUPATION

Manager – senior or middle level manager: manager of an enterprise, company, organisation, department, a leading specialist in an enterprise or institution.

Specialist, state official – state official or employee in a state or municipal institution or private company; does not do a physical job.

Worker – ordinary employee in industry, building, agriculture, trading, services, public catering; does a physical job.

Farmer – a person who works in his/her own farm.

Self-employed – a self-employed person, also a professional specialist (a lawyer, a doctor, etc.), owns his/her business.

Retired – a retired person who is not employed, also retired due to disabilities.

Pupil, student – a person who attends a day department of any educational establishment.

Housewife – a person who looks after his/her house and currently is not employed; a person on maternity leave.

Unemployed – a person in his/her employment age but without work.

LEVEL OF INCOME

Average income per family member in a month, including all types of income (salaries, study grants, benefits, pensions, etc.) after taxes.

Low – till LVL55

Medium low – LVL56 to LVL75

Medium – LVL76 to LVL99

Medium high – LVL100 to LVL149

High – LVL150 and more

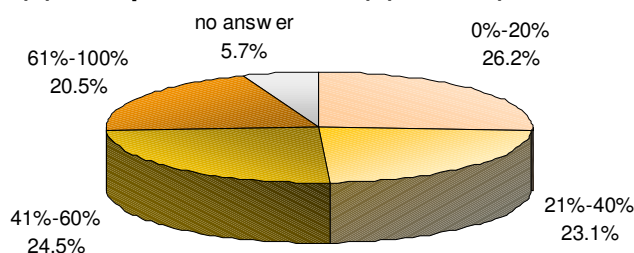
Main results

1. Opinions about subsection of children to corporal punishment in Latvia

Within the survey of Latvia's population in October 2005, the respondents were asked to evaluate the percentage of children who, according to their opinion, are subjected to corporal punishment (beating, spanking as punishment) in their families in Latvia.

The following chart presents data showing the answers of the respondents (it should be pointed out that the answers were not offered to respondents, they gave answers that were put in larger groups during the analysis of data).

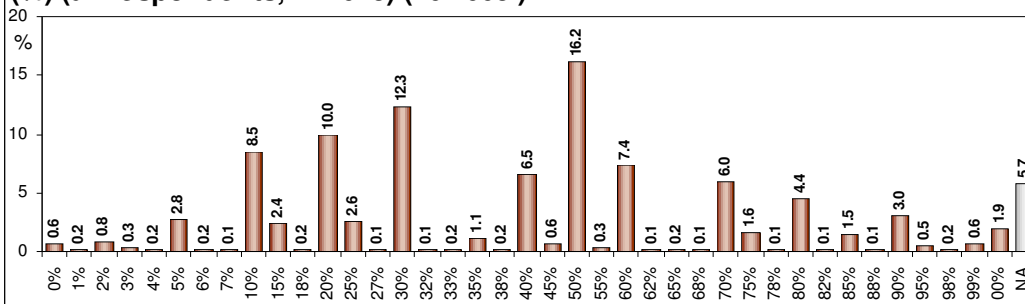
Answers to the question 'Regarding the entire population of children in your country as 100%, please estimate, what percentage of them experience corporal punishment (or beating/spanking as a penalty) in their families.' (%) (all respondents, n=1015) (10.2005.)



According to the survey results, 26% of population have indicated that not more than 20% of children in Latvia are subjected to corporal punishment (beating, spanking). Almost 1/4 of the respondents (23%) have answered that 21%-40% of children suffer from corporal punishment, about the same number (25%) of the surveyed have mentioned the figures from 41% to 60%. Opinion, that the most part of children (61%-100%) in families in Latvia are subjected to corporal punishment, was expressed by 21% of population.

The next chart shows detailed information concerning the respondents' answers without classifying them into larger groups.

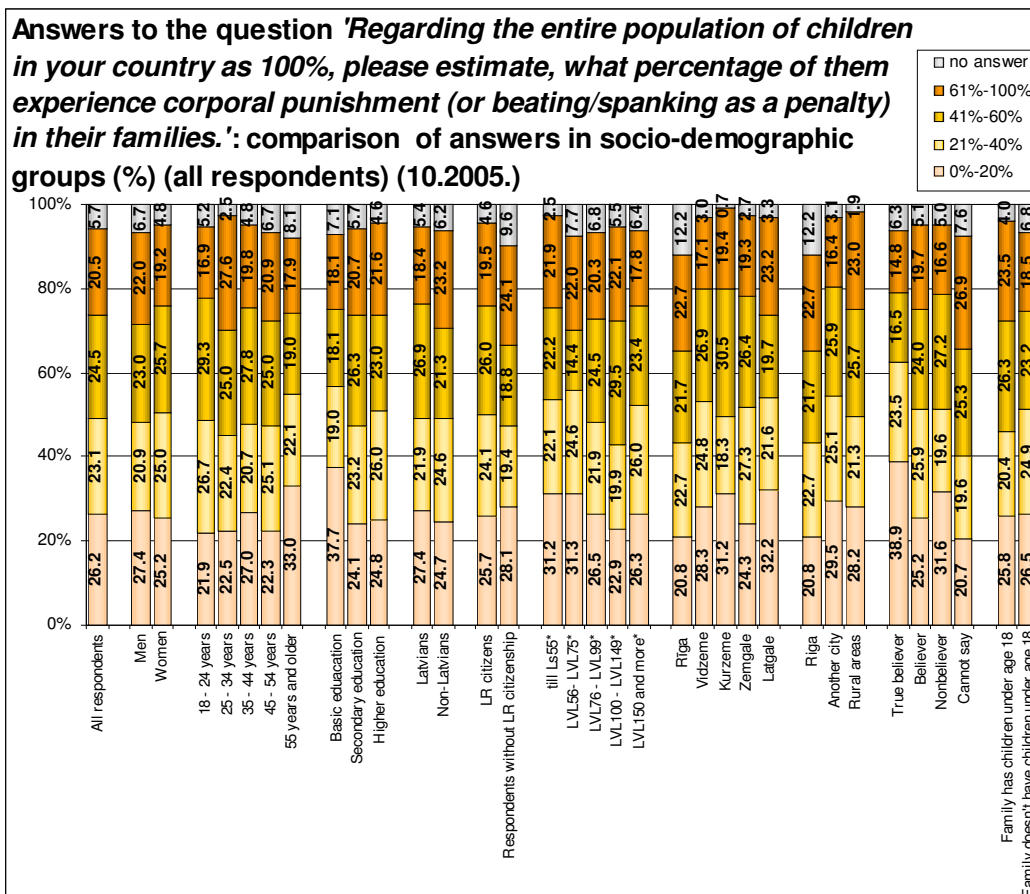
Answers to the question 'Regarding the entire population of children in your country as 100%, please estimate, what percentage of them experience corporal punishment (or beating/spanking as a penalty) in their families.' (%) (all respondents, n=1015) (10.2005.)



Analysing the total classification of the received answers, it has to be concluded that the most often given answer was "50%" – the opinion that a half of all children in families in Latvia are subjected to corporal punishment was expressed by 16% of the surveyed. The fact that none of the children in families in Latvia is subjected to

corporal punishment was indicated by 0.6% of the respondents, while 1.9% answered that all children are subjected to corporal punishment in their families.

Data referring the answers of socio-demographic groups to the question “*Regarding the entire population of children in your country as 100%, please estimate, what percentage of them experience corporal punishment (or beating/spanking as a penalty) in their families*” are presented in the following chart.



*Average income per family member in a month.

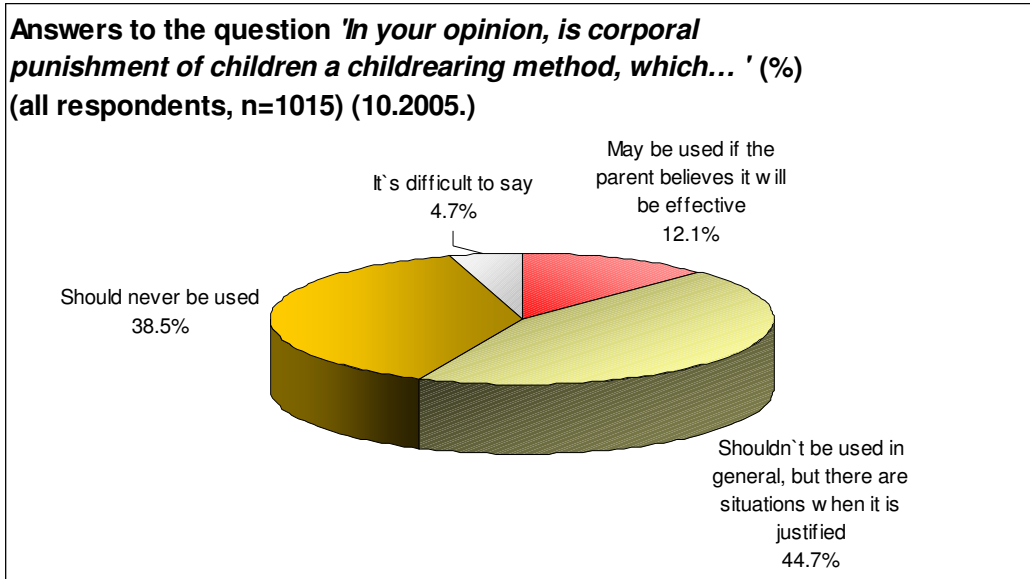
Characterizing the opinions of the socio-demographic groups on how many children in Latvia are subjected to corporal punishment in their families, it has to be indicated that the answers from “0%” to “20%” have been more often than average given by the surveyed who are older than 55 years (33%), respondents with basic education (38%), population with low or medium low income (31% in both groups), people living in Kurzeme (31%) and Latgale (32%), as well as respondents in other cities (except Riga) (30%). It should be added that such answers have been more often than average given by the respondents both “true believers” (39%) and “non-believers” (32%).

The fact that the most part of children in Latvia (61%-100%) are subjected to corporal punishment in their families has been more often than average indicated by people in the age from 25 to 34 (28%), respondents without LR citizenship (24%), the surveyed without a clear position as to their religious belief (27%) as well as residents whose families have children under age 18 (24%).

2. Attitude towards corporal punishment as a childrearing method

Within the survey the residents were asked to express their attitude towards the corporal punishment as a childrearing method, indicating the most suitable answer of the following: *“may be used if the parent believes it will be effective”, “should not be used in general, but there are situations when it is justified” or “should never be used”*.

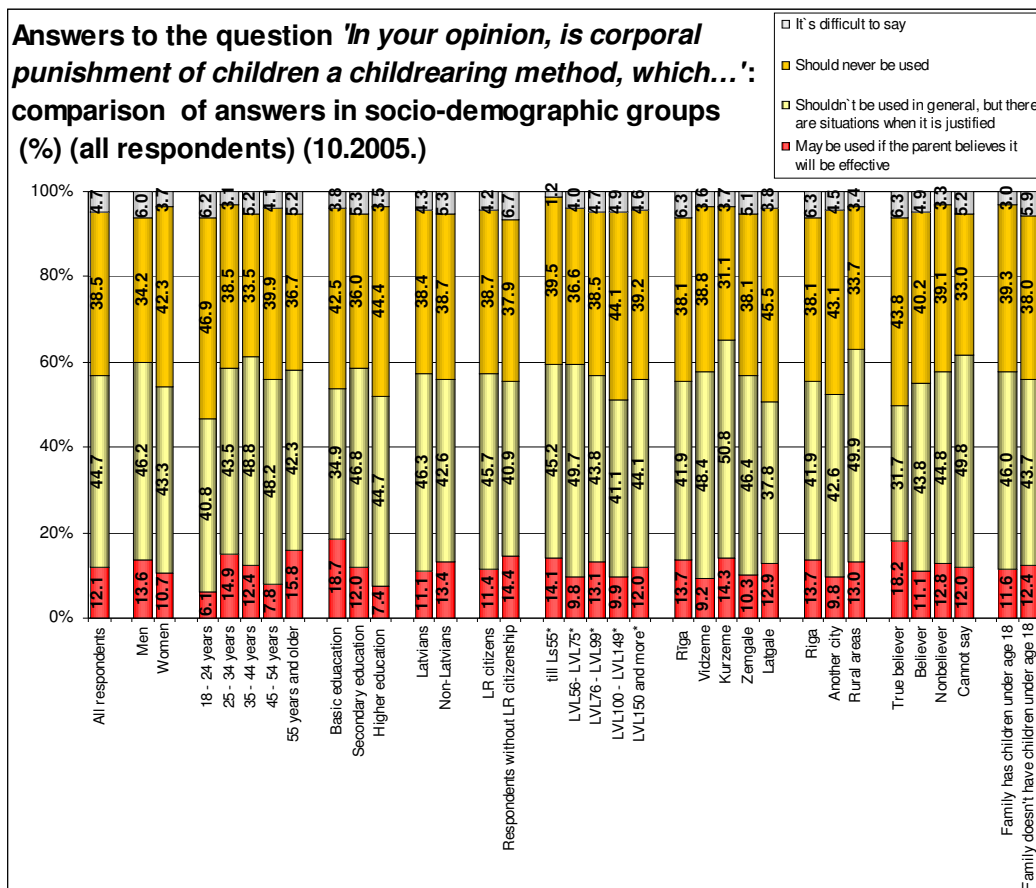
The following chart presents data concerning the respondents' attitude to corporal punishment as a childrearing method.



In general, more than a half of Latvia's population consider that corporal punishment as a childrearing method can be justified – 12% of the surveyed indicated that corporal punishment is a method of upbringing, which *“may be used if the parent believes it will be effective”*, and 45% marked the answer *“should not be used in general, but there are situations when it is justified”*.

The opinion that corporal punishment is a childrearing method, which *“should never be used”*, was expressed by 39% of respondents.

Data about the attitude of the socio-demographic groups towards corporal punishment as a childrearing method are presented in the following chart.



*Average income per family member in a month.

When comparing the attitudes of different socio-demographic groups, it should be pointed out that the answer "may be used if the parent believes it will be effective" has been more often than average indicated by people who are older than 55 (16%), respondents with basic education (19%) and the surveyed who consider themselves as "true believers" (18%).

The answer "should not be used in general, but there are situations when it is justified" has been more often than average marked by the participants of the survey in the age from 35 to 44 (49%) and from 45 to 54 (48%), residents with medium low income (50%), people living in Vidzeme (48%) and Kurzeme (51%), respondents from rural areas (50%), as well as the surveyed who cannot define their religious position (50%).

The fact that corporal punishment is a method of childrearing which "should never be used" has been more often than average indicated by women (42%), young people in the age from 18 to 24 (47%), people with basic education (43%) or higher education (44%), the surveyed with medium high income (44%), respondents in Latgale (46%), people living in other cities (except Riga) (43%), as well as respondents who consider themselves to be true believers (44%).

TABLES OF RESULTS

1. Regarding the entire population of children in your country as 100%, please estimate, what percentage of them experience corporal punishment (or beating/spanking as a penalty) in their families.

		Count	Col %
Regarding the entire population	.00	6	.6%
of children in your country as	1.00	2	.2%
100%, please estimate, what	2.00	8	.8%
percentage of them experience	3.00	3	.3%
corporal punishment (or	4.00	2	.2%
beating/spanking as a penalty) in	5.00	28	2.8%
their families.	6.00	2	.2%
	7.00	1	.1%
	10.00	87	8.5%
	15.00	24	2.4%
	18.00	2	.2%
	20.00	101	10.0%
	25.00	26	2.6%
	27.00	1	.1%
	30.00	125	12.3%
	32.00	1	.1%
	33.00	2	.2%
	35.00	11	1.1%
	38.00	2	.2%
	40.00	66	6.5%
	45.00	6	.6%
	50.00	164	16.2%
	55.00	3	.3%
	60.00	75	7.4%
	62.00	1	.1%
	65.00	2	.2%
	68.00	1	.1%
	70.00	61	6.0%
	75.00	16	1.6%
	78.00	1	.1%
	80.00	45	4.4%
	82.00	1	.1%
	85.00	15	1.5%
	88.00	1	.1%
	90.00	31	3.0%
	95.00	5	.5%
	98.00	2	.2%
	99.00	7	.6%
	100.00	19	1.9%
	No answer	58	5.7%
	Total	1015	100.0%

1. Regarding the entire population of children in your country as 100%, please estimate, what percentage of them experience corporal punishment (or beating/spanking as a penalty) in their families.

		Count	Col %
Regarding the entire population of children in	0%-20%	266	26.2%
your country as 100%, please estimate, what	21%-40%	235	23.1%
percentage of them experience corporal	41%-60%	248	24.5%
punishment (or beating/spanking as a penalty)	61%-100%	208	20.5%
in their families.	NA	58	5.7%
	Total	1015	100.0%

1. Regarding the entire population of children in your country as 100%, please estimate, what percentage of them experience corporal punishment (or beating/spanking as a penalty) in their families.

		Regarding the entire population of children in your country as 100%, please estimate, what percentage of them experience corporal punishment (or beating/spanking as a penalty) in their families.										Total	
		0%-20%		21%-40%		41%-60%		61%-100%		NA			
		Count	Row %	Count	Row %	Count	Row %	Count	Row %	Count	Row %	Count	Row %
All respondents		266	26.2%	235	23.1%	248	24.5%	208	20.5%	58	5.7%	1015	100%
Sex	Men	129	27.4%	99	20.9%	109	23.0%	104	22.0%	32	6.7%	472	100%
	Women	137	25.2%	136	25.0%	140	25.7%	104	19.2%	26	4.8%	543	100%
Age	18 - 24 years	33	21.9%	40	26.7%	44	29.3%	25	16.9%	8	5.2%	149	100%
	25 - 34 years	43	22.5%	43	22.4%	48	25.0%	53	27.6%	5	2.5%	191	100%
	35 - 44 years	53	27.0%	41	20.7%	54	27.8%	39	19.8%	9	4.8%	196	100%
	45 - 54 years	42	22.3%	47	25.1%	47	25.0%	39	20.9%	13	6.7%	188	100%
	55 years and older	96	33.0%	64	22.1%	55	19.0%	52	17.9%	24	8.1%	292	100%
Education	Basic	56	37.7%	28	19.0%	27	18.1%	27	18.1%	11	7.1%	148	100%
	Secondary, secondary vocational	162	24.1%	156	23.2%	177	26.3%	139	20.7%	38	5.7%	673	100%
	Higher	48	24.8%	50	26.0%	45	23.0%	42	21.6%	9	4.6%	194	100%
Nationality	Latvians	157	27.4%	126	21.9%	154	26.9%	106	18.4%	31	5.4%	574	100%
	Non-Latvians	109	24.7%	109	24.6%	94	21.3%	102	23.2%	27	6.2%	441	100%
Citizenship	LR citizens	204	25.7%	192	24.1%	207	26.0%	155	19.5%	37	4.6%	794	100%
	Respondents without LR citizenship	62	28.1%	43	19.4%	42	18.8%	53	24.1%	21	9.6%	221	100%
Sector of employment	Public sector	42	21.6%	48	24.6%	54	27.5%	43	21.7%	9	4.6%	196	100%
	Private sectors	114	26.8%	96	22.7%	107	25.1%	84	19.7%	24	5.7%	425	100%
	Unemployed	110	28.0%	90	22.8%	88	22.3%	82	20.7%	25	6.3%	394	100%
Occupation	Manager	13	29.8%	11	26.9%	8	18.9%	8	19.4%	2	5.0%	42	100%
	Specialist, state official	64	24.4%	65	24.7%	73	27.7%	50	18.8%	12	4.5%	265	100%
	Worker	55	20.9%	65	24.5%	68	25.8%	58	22.0%	18	6.9%	265	100%
	Farmer	7	46.6%	1	5.7%	4	22.6%	4	25.1%			16	100%
	Self-employed	17	48.9%	3	7.5%	7	21.9%	6	19.0%	1	2.7%	34	100%
	Retired	70	31.5%	49	22.0%	42	18.9%	39	17.8%	22	9.8%	221	100%
	Pupil, student	10	17.4%	15	26.6%	17	30.1%	12	22.2%	2	3.8%	56	100%
	Housewife	15	27.7%	8	15.6%	15	27.7%	15	29.0%			53	100%
	Unemployed	16	25.3%	18	28.0%	15	22.7%	14	22.5%	1	1.4%	64	100%
Level of income	till Ls55	51	31.2%	36	22.1%	36	22.2%	36	21.9%	4	2.5%	163	100%
	LVL56 - LVL75	52	31.3%	41	24.6%	24	14.4%	36	22.0%	13	7.7%	166	100%
	LVL76 - LVL99	33	26.5%	27	21.9%	30	24.5%	25	20.3%	8	6.8%	123	100%
	LVL100 - LVL149	41	22.9%	36	19.9%	53	29.5%	40	22.1%	10	5.5%	179	100%
	LVL150 and more	44	26.3%	44	26.0%	39	23.4%	30	17.8%	11	6.4%	169	100%
	Doesn't know/ NA	46	21.1%	51	23.7%	66	30.5%	41	19.0%	12	5.6%	216	100%
Region	Riga	69	20.8%	75	22.7%	72	21.7%	75	22.7%	41	12.2%	332	100%
	Vidzeme	68	28.3%	60	24.8%	65	26.9%	41	17.1%	7	3.0%	242	100%
	Kurzeme	42	31.2%	25	18.3%	41	30.5%	26	19.4%	1	.7%	134	100%
	Zemgale	36	24.3%	40	27.3%	39	26.4%	29	19.3%	4	2.7%	148	100%
	Latgale	51	32.2%	34	21.6%	31	19.7%	37	23.2%	5	3.3%	159	100%
Residential Area	Riga	69	20.8%	75	22.7%	72	21.7%	75	22.7%	41	12.2%	332	100%
	Another city	108	29.5%	92	25.1%	95	25.9%	60	16.4%	11	3.1%	367	100%
	Rural areas	89	28.2%	67	21.3%	81	25.7%	73	23.0%	6	1.9%	317	100%
Do you think you are...	True believer	24	38.9%	14	23.5%	10	16.5%	9	14.8%	4	6.3%	61	100%
	Believer	132	25.2%	136	25.9%	126	24.0%	103	19.7%	27	5.1%	525	100%
	Nonbeliever	62	31.6%	38	19.6%	53	27.2%	32	16.6%	10	5.0%	195	100%
	Cannot say	48	20.7%	46	19.6%	59	25.3%	63	26.9%	18	7.6%	234	100%
Are there children under age 18 in your family?	Yes	104	25.8%	82	20.4%	106	26.3%	95	23.5%	16	4.0%	403	100%
	No	162	26.5%	152	24.9%	142	23.2%	113	18.5%	42	6.8%	612	100%

2. In your opinion, is corporal punishment of children a childrearing method, which...

		Count	Col %
In your opinion, is corporal punishment of children a childrearing method, which...	May be used if the parent believes it will be effective	123	12.1%
	Shouldn't be used in general, but there are situations when it is justified	453	44.7%
	Should never be used	391	38.5%
	It's difficult to say	48	4.7%
Total		1015	100.0%

2. In your opinion, is corporal punishment of children a childrearing method, which...

		In your opinion, is corporal punishment of children a childrearing method, which...								Total	
		May be used if the parent believes it will be effective		Shouldn't be used in general, but there are situations when it is justified		Should never be used		It's difficult to say		Count	Row %
		Count	Row %	Count	Row %	Count	Row %	Count	Row %		
All respondents		123	12.1%	453	44.7%	391	38.5%	48	4.7%	1015	100.0%
Sex	Men	64	13.6%	218	46.2%	161	34.2%	28	6.0%	472	100.0%
	Women	58	10.7%	235	43.3%	230	42.3%	20	3.7%	543	100.0%
Age	18 - 24 years	9	6.1%	61	40.8%	70	46.9%	9	6.2%	149	100.0%
	25 - 34 years	28	14.9%	83	43.5%	73	38.5%	6	3.1%	191	100.0%
	35 - 44 years	24	12.4%	96	48.8%	66	33.5%	10	5.2%	196	100.0%
	45 - 54 years	15	7.8%	90	48.2%	75	39.9%	8	4.1%	188	100.0%
	55 years and older	46	15.8%	123	42.3%	107	36.7%	15	5.2%	292	100.0%
Education	Basic	28	18.7%	52	34.9%	63	42.5%	6	3.8%	148	100.0%
	Secondary, secondary vocational	80	12.0%	315	46.8%	242	36.0%	36	5.3%	673	100.0%
	Higher	14	7.4%	87	44.7%	86	44.4%	7	3.5%	194	100.0%
Nationality	Latvians	63	11.1%	266	46.3%	220	38.4%	25	4.3%	574	100.0%
	Non-Latvians	59	13.4%	188	42.6%	171	38.7%	24	5.3%	441	100.0%
Citizenship	LR citizens	91	11.4%	363	45.7%	307	38.7%	33	4.2%	794	100.0%
	Respondents without LR citizenship	32	14.4%	90	40.9%	84	37.9%	15	6.7%	221	100.0%
Sector of employment	Public sector	19	9.7%	99	50.3%	73	37.2%	6	2.9%	196	100.0%
	Private sectors	54	12.8%	191	44.9%	155	36.6%	25	5.8%	425	100.0%
	Unemployed	49	12.5%	164	41.6%	163	41.3%	18	4.6%	394	100.0%
Occupation	Manager	5	11.8%	21	49.2%	15	36.0%	1	3.0%	42	100.0%
	Specialist, state official	23	8.8%	125	47.1%	105	39.6%	12	4.5%	265	100.0%
	Worker	38	14.3%	128	48.3%	86	32.4%	13	5.0%	265	100.0%
	Farmer	4	25.4%	6	40.7%	5	33.9%			16	100.0%
	Self-employed	3	9.3%	10	29.0%	17	50.6%	4	11.1%	34	100.0%
	Retired	36	16.2%	95	43.2%	79	35.8%	10	4.7%	221	100.0%
	Pupil, student	1	2.1%	15	26.7%	36	65.1%	3	6.1%	56	100.0%
	Housewife	2	3.9%	24	46.5%	26	49.6%			53	100.0%
	Unemployed	10	16.0%	29	45.1%	21	32.7%	4	6.3%	64	100.0%
Level of income	till Ls55	23	14.1%	74	45.2%	64	39.5%	2	1.2%	163	100.0%
	LVL56- LVL75	16	9.8%	82	49.7%	61	36.6%	7	4.0%	166	100.0%
	LVL76 - LVL99	16	13.1%	54	43.8%	47	38.5%	6	4.7%	123	100.0%
	LVL100 - LVL149	18	9.9%	73	41.1%	79	44.1%	9	4.9%	179	100.0%
	LVL150 and more	20	12.0%	74	44.1%	66	39.2%	8	4.6%	169	100.0%
	Doesn't know/ NA	29	13.6%	96	44.2%	74	34.1%	17	8.0%	216	100.0%
Region	Riga	45	13.7%	139	41.9%	126	38.1%	21	6.3%	332	100.0%
	Vidzeme	22	9.2%	117	48.4%	94	38.8%	9	3.6%	242	100.0%
	Kurzeme	19	14.3%	68	50.8%	42	31.1%	5	3.7%	134	100.0%
	Zemgale	15	10.3%	69	46.4%	56	38.1%	8	5.1%	148	100.0%
	Latgale	21	12.9%	60	37.8%	72	45.5%	6	3.8%	159	100.0%
Residential Area	Riga	45	13.7%	139	41.9%	126	38.1%	21	6.3%	332	100.0%
	Another city	36	9.8%	156	42.6%	158	43.1%	17	4.5%	367	100.0%
	Rural areas	41	13.0%	158	49.9%	107	33.7%	11	3.4%	317	100.0%
Do you think you are...	True believer	11	18.2%	19	31.7%	27	43.8%	4	6.3%	61	100.0%
	Believer	58	11.1%	230	43.8%	211	40.2%	26	4.9%	525	100.0%
	Nonbeliever	25	12.8%	88	44.8%	76	39.1%	6	3.3%	195	100.0%
	Cannot say	28	12.0%	117	49.8%	77	33.0%	12	5.2%	234	100.0%
Are there children under age 18 in your family?	Yes	47	11.6%	186	46.0%	159	39.3%	12	3.0%	403	100.0%
	No	76	12.4%	268	43.7%	232	38.0%	36	5.9%	612	100.0%

QUESTIONNAIRE

1. Regarding the entire population of children in your country as 100%, please estimate, what percentage of them experience corporal punishment (or beating/spanking as a penalty) in their families.

Please, complete the following sentence:

Physical punishment is experienced by% of children in Latvia.

2. In your opinion, is corporal punishment of children a childrearing method, which... (Mark only one answer)

May be used if the parent believes it will be effective	1
Shouldn't be used in general, but there are situations when it is justified	2
Should never be used	3
It's difficult to say	8

SKDS

marketing and public opinion research centre

Baznicas str. 32-2, Riga, Latvia, LV-1010
Phone: +371 7 312 876, Fax: +371 7 312 874
E-mail: skds@skds.lv
www.skds.lv